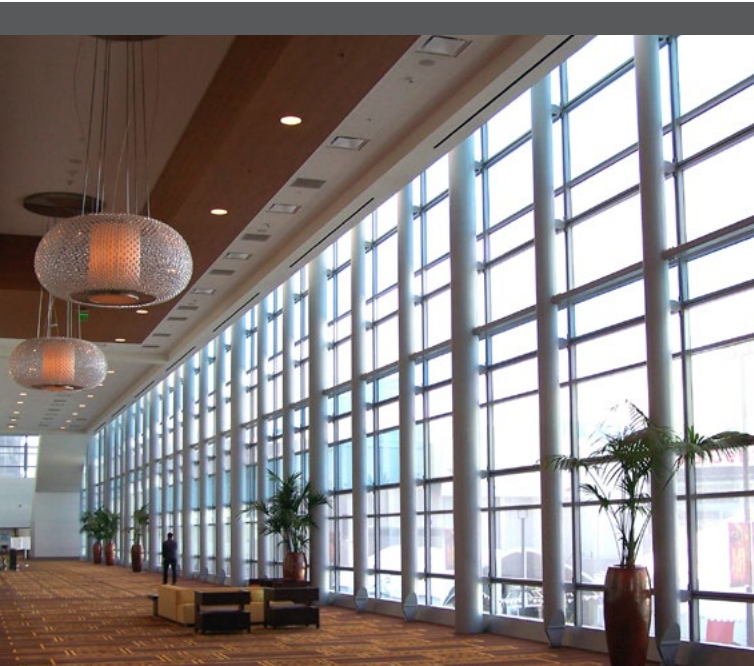


# Thermo-Lag<sup>®</sup> E100

Epoxy Intumescent Fireproofing





# Thermo-Lag E100 is an epoxy intumescent fireproofing system

with an advanced formulation eliminating the need for a mesh reinforcement layer. It was specifically designed to provide 1-3 hour cellulosic fire protection for commercial and light industrial structural steel.

## Benefits of Thermo-Lag E100

---

- › Most complete certified W/D range in the industry
- › Certified to UL 263/ASTM E119/NFPA 251/CAN/ULC S 101-07 up to 3 hours
- › Most efficient epoxy intumescent in the industry
- › Self reinforced, no mesh needed
- › Saves application time, high film build, fast cure
- › Rated for exterior and interior use
- › LEED compliant
- › Easy to apply, 1:1 mix ratio
- › Highest quality aesthetics
- › Can be applied in a shop or field environment

## Applications

---

- › Commercial buildings
- › Light industrial facilities
- › Clean rooms
- › Manufacturing plants
- › Factories and warehouses
- › Stadiums and convention centers
- › Airport terminals
- › Museums
- › Hospitals

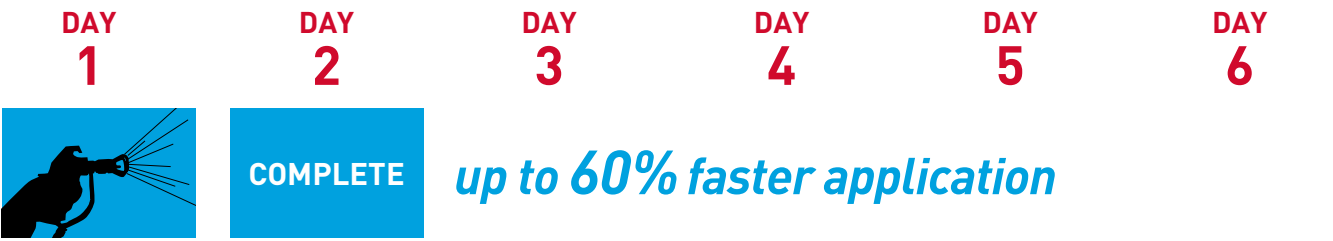




# Thermo-Lag E100 is a tough, durable material

that can deliver lasting physical performance. It is the ideal solution for both onsite and offsite application, providing the ultimate in design flexibility and enhanced project scheduling.

## ON-SITE TIME AND LABOR SAVINGS



Thermo-Lag E100 can be applied up to 200 mils per day, most applications are complete in two days.



Competitor water based intumescent can take up to six or more days to complete.

## Offsite Speed and Durability

- > Fast application and shop throughput
- > Hard, durable material resistant to damage
- > High flexural strength
- > High quality finish in less time
- > Connections are easily fireproofed onsite





# Thermo-Lag E100 saves lives and assets.

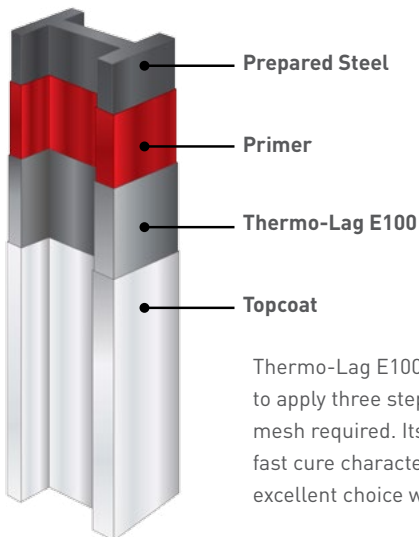
When exposed to a fire Thermo-Lag E100 intumesces or swells, producing a heat blocking char which insulates the steel from exposure to high temperatures. This allows more time for people to exit and firefighters to respond.

## APPLICATION PROPERTIES

	THERMO-LAG E100	THERMO-LAG E100 S
Construction Phase	Onsite or Offsite	Onsite or Offsite
Recoat Time	30 Min	4 Hrs
Volume Solids	100%	95%
Film Build (Per Coat)	60-200 Mils (1.5-5 mm)	60-120 Mils (1.5-3 mm)
Application Method	Plural Component, Trowel	Plural Component, Single Component, Trowel

## PERFORMANCE DATA

Hardness (ASTM D2240)	>Shore D 60
Impact Resistance (ASTM D2794)	0.75 ft. lbs/in
Bond Strength (ASTM D4541)	>1,200 psi (>8.2 Mpa)
Compressive Strength (ASTM D695)	>2,330 psi (>16 MPa)
Flexural Strength (ASTM D790)	>1,220 (>8.4 MPa)
Surface Burning (ASTM D84)	Class A



Thermo-Lag E100 System is an easy to apply three step process, with no mesh required. Its high film build and fast cure characteristics make it an excellent choice when time is critical.

## UL Environmental Testing

---

Thermo-Lag E100 is in full compliance with the acceptance criteria for the UL Environmental Test Program and is rated by UL for both exterior and interior use.

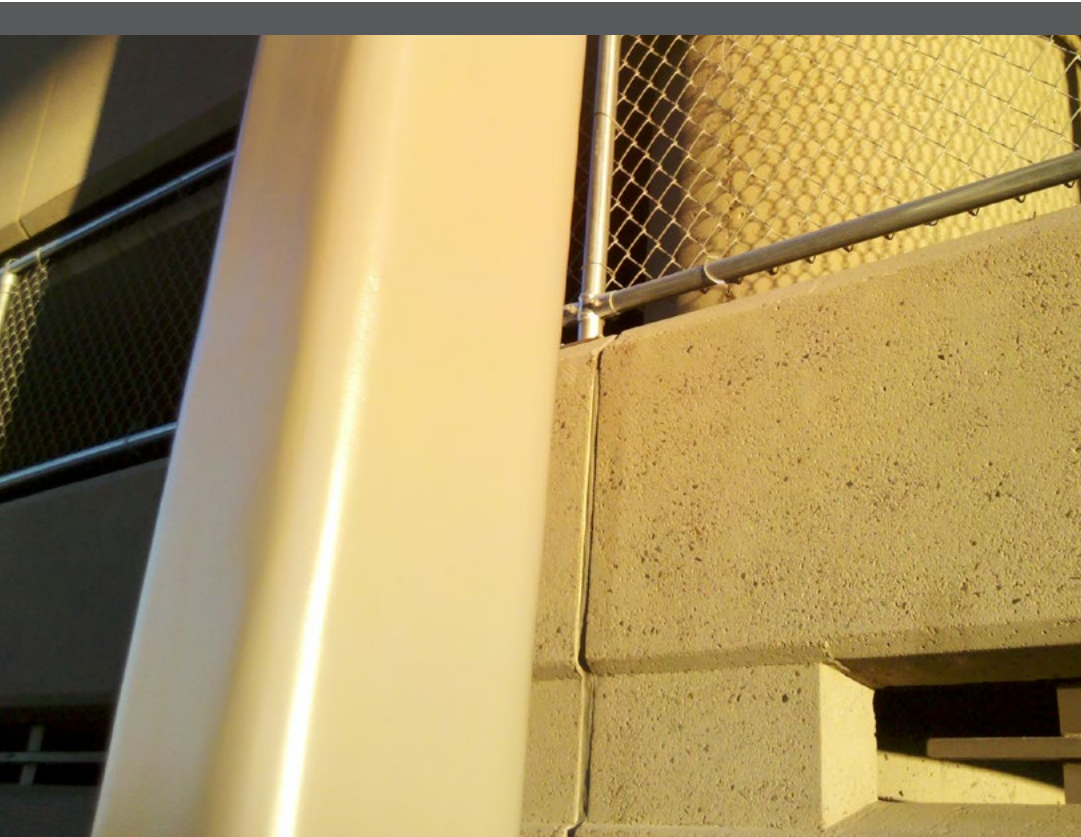
## Certifications

---

Thermo-Lag E100 has undergone extensive third-party testing, and is certified in accordance to UL 263/ASTM E119/NFPA 251/CAN/ULC S 101-07.

It offers 1-3 hour cellulosic fire protection for:

- > Restrained/unrestrained beams
- > I-section columns
- > Tubular columns
- > Pipes



# Thermo-Lag E100 Finish Levels

## Choosing the Right Finish

This guide provides architects options to select and clearly define the needed aesthetic level for a project and describes the application techniques required. It is always good practice to produce a representative sample which should be used as the quality standard for the project.



### Definition

---

Standard sprayed finish applied to specified DFT requirements with surface irregularities. Surface has a textured appearance.

### Procedures

---

Spray application with airless equipment. Surface is left as sprayed with hand tooling or back rolling on edges only.

### Suggested Use

---

Areas where surface appearance is not of primary concern or not visible such as, mechanical rooms, parking garages, and light industrial applications.



### Definition

---

Sprayed and back rolled finish applied to specified DFT requirements with some surface irregularities. Uniform, light texture with minimal surface defects.

### Procedures

---

Spray application with airless equipment. Surface is then back rolled to smooth high points and surface defects. Back rolling/hand tooling are required on flanges and angles. Material must be applied in a consistent manner with lighter coats. This will maintain the best possible finish prior to any secondary surface finishing.

### Suggested Use

---

Visible areas where a uniform texture and an upgrade from a Level 1 Finish is desired.

## Level of Finish Depends on Application Technique

Thermo-Lag E100 is used on many projects where surface finish and aesthetics are important. A high quality surface finish is easy to obtain with Thermo-Lag E100. There are a range of finish levels that can be achieved depending on requirements and the aesthetics desired.



### Definition

---

Spray applied to specified DFT requirements, back rolled and sanded. Some slight texture visible. Uniform appearance with minimal surface defects.

### Procedures

---

Spray application with airless equipment. Surface is then back rolled to smooth high points and surface defects. Back rolling and hand tooling are required. Surface is then sanded to minimize texture. Material must be applied in a consistent manner with lighter coats. This will maintain the best possible finish prior to any secondary surface finishing.

### Suggested Use

---

Areas with high visibility where high quality finish is desired.



### Definition

---

Spray applied to specified DFT requirements, back rolled and sanded. No texture visible. Uniform smooth appearance with no surface defects. Surface shall be smooth and free of tool marks and ridges.

### Procedures

---

Spray application with airless equipment. Surface is then back rolled to smooth high points and surface defects. Back rolling and hand tooling are required. Surface is then sanded smooth to eliminate orange peel texture. Material must be applied in a consistent manner with lighter coats. This will maintain the best possible finish prior to any secondary surface finishing.

### Suggested Use

---

Areas where highest quality finish is desired.

**Application Considerations** It is important to understand that application time and labor required will increase with higher finishing levels. Carboline is not responsible for determining what finish is acceptable. The level of finish achieved will depend on: experience of the applicator, ambient conditions, application method and equipment, access to steel, size and configuration of steel structure.

# GLOBAL COATINGS LEADERS™

RIGHT PEOPLE · RIGHT PRODUCTS · RIGHT LOCATIONS



## GLOBAL MANUFACTURING PLANTS

**CARBOLINE COMPANY**  
GLOBAL HEADQUARTERS  
2150 SCHUETZ ROAD  
ST. LOUIS, MO 63146 USA  
PH: +1-314-644-1000  
WWW.CARBOLINE.COM

**ARGENTINA - BUENOS AIRES**  
EINSTEIN 1095  
PARQUE INDUSTRIAL OKS  
GARÍN PROV. DE BUENOS  
AIRES, ARGENTINA  
PHONE: 54-3327-44-2222  
FAX: 54-3327-44-2223

**AUSTRALIA - BRISBANE**  
7 PRODUCTION AVE  
ERNEST JUNCTION  
QUEENSLAND 4214  
AUSTRALIA  
PHONE: +61 7 3287 0222  
FAX: +61 7 5594 9093

**BRAZIL - JARDIM CAMPO  
GRANDE**  
CNPJ: 58.681.867/0001-30  
RODOVIA VITO ARDITO, 6401  
KM 118.5, JARDIM CAMPO  
GRANDE  
12282-535 CACAPAVA SP  
BRAZIL

**CANADA - ONTARIO**  
420 TAPSCOTT ROAD UNIT 5  
SCARBOROUGH, ONTARIO  
M1B 1Y4, CANADA  
PHONE: 416-292-2361  
FAX: 416-298-5887

**CHINA - DALIAN**  
HOU SHI CUN, DA WEI JIA  
ZHEN  
JIN ZHOU DISTRICT  
DALIAN, CHINA 116110  
PHONE: 86-411-8789-8441,  
8442, 8443, 8444  
FAX: 86-411-8789-8445

**INDIA - CHENNAI**  
NO. 356 & 357 SIDCO  
INDUSTRIAL ESTATE  
AMBATTUR,  
CHENNAI 600 098  
INDIA  
PHONE: 91-22-28500321  
FAX: 91-22-28500323

**INDIA - MAHARASHTRA**  
GUT NO. 300  
VILLAGE MUSSARNE  
BHIWANDI WADA ROAD,  
TALUKA WADA,  
DISTRICT PALGHAR,  
MAHARASHTRA  
INDIA

**ITALY - ALGHERO**  
VIA MILANO 150  
20093 COLOGNO MONZESE  
[MI], ITALY  
PHONE: 3902-25 3751  
FAX: 3902-25 37560

**JAPAN - AMAGASAKI**  
TERAMOTO UNYU SOKO CO.,  
LTD 17  
MINAMIHATSUSHIMA-CHO,  
AMAGASAKI, 660-0833 JAPAN  
PHONE: 81-3-3643-4501  
FAX: 81-3-3643-2951

**MALAYSIA - KUALA LUMPUR**  
LOT 37631-37632 JALAN 6/37A  
TAMAN BUKIT MALURI  
INDUSTRIAL AREA  
KEPONG 52100,  
KUALA LUMPUR, MALAYSIA  
PHONE: 603-6277-9575  
FAX: 603-6277-4645

**NEW ZEALAND - TAURANGA**  
91-111 OROPI ROAD  
GREERTON  
TAURANGA  
NEW ZEALAND  
PHONE: +64 7 5411 221  
FAX: +64 7 541 1310

**NORWAY - LIERSTRANDA**  
P.O. BOX 593  
3412 LIERSTRANDA, NORWAY  
PHONE: 47-32-857300  
FAX: 47-32-857301

**PUERTO RICO - SAN LORENZO**  
URB. APONTE #5  
SAN LORENZO, PUERTO RICO  
00754  
PHONE: 787-736-4221  
FAX: 787-736-53133

**SAUDI ARABIA - DAMMAM**  
1ST INDUSTRY CITY, 28TH  
STREET  
P.O. BOX 1050  
DAMMAM 31431,  
KINGDOM OF SAUDI ARABIA  
PHONE: +966 3 847 3044  
FAX: +966 3 847 3689

**SPAIN - VALLIRANA**  
PERLITA Y VERMICULITA SL  
VAT NO. ESB58598418  
POLIGONO INDUSTRIAL CAN  
PRUNERA S/N  
VALLIRANA 08759  
SPAIN

**SOUTH AFRICA -  
JOHANNESBURG**  
8 CRESSET ROAD  
MIDRAND INDUSTRIAL PARK  
JOHANNESBURG,  
SOUTH AFRICA  
PHONE: 27-11-2545500  
FAX: 27-11-310-2872

**SOUTH KOREA - BUSAN**  
43-1, JINYOUNG-RI  
JINYOUNG-EUB  
KIMHAE-CITY, 621-800  
KYOUNGSANGNAMDO, KOREA  
PHONE: 82-55-343-6441/5  
FAX: 82-55-343-6414

**TURKEY - BURSA**  
ALI OSMAN SONMES CAD.  
NO:4  
BURSA, DOSAB 16369 TURKEY  
PHONE: 90-224-261-0537

**UAE - DUBAI**  
P.O. BOX 3034  
DUBAI, UAE  
PHONE: 971-4-347-0460  
FAX: 971-4-347-0242

**USA - DAYTON**  
95 AIRPARK VISTA BLVD.  
DAYTON, NV 89403  
PHONE: 775-246-0760  
FAX: 775-246-0763

**USA - GREEN BAY**  
614 ELIZABETH ST  
GREEN BAY, WI 54302  
PHONE: 920-437-6561  
FAX: 920-437-8546

**USA - LAKE CHARLES**  
900 OPELOUSAS STREET  
LAKE CHARLES, LA 70601  
PHONE: 337-433-0605  
FAX: 337-439-0380

**USA - LOUISA**  
321 DUKE ST.  
LOUISA VA 23093  
PHONE: 540-967-5119  
FAX: 540-967-5120

**VENEZUELA - VALENCIA**  
URBANIZACION INDUSTRIAL  
"EL TIGRE"  
AVENIDA PRINCIPAL  
GALPÓN "H"  
VALENCIA EDO. CARABOBO  
VENEZUELA  
PHONE: 58-245-4000400  
FAX: 58-245-5642011

**VIETNAM - TINH BINH DUONG**  
LO D, 4R-CN,  
KHU CONG NGHIEP MY PHUOC 3  
THI XA BEN CAT  
TINH BINH DUONG  
VIETNAM

